

Installation instructions

WELDANO® ROFLEX PLUS

Installation steps: Pipe feed-throughs



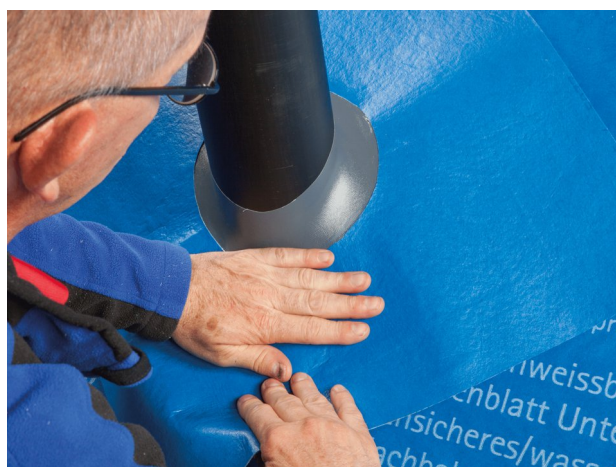
1. Preparation

Remove dirt from SOLITEX WELDANO 3000 using a cloth, for example. Adhesion to frozen membranes is not possible. There must be no water-repellent substances (e.g. grease or silicone) on the membranes. Subsurfaces must be sufficiently dry and have sufficient load-bearing capacity.



2. Create the bond

Guide WELDANO ROFLEX PLUS over the pipe.



3. Guide onto the subsurface

Place the grommet onto the subsurface for bonding to SOLITEX WELDANO 3000, ensuring that there are no folds in the grommet. The resulting flange must point upwards.



4. Weld the grommet to the membrane

Weld the grommet around the edges using the WELDANO TURGA solvent welding agent or hot air. The effective joint width (area covered with solvent welding agent) must be at least 3 cm (1 3/16") wide and must extend as far as the edge of WELDANO ROFLEX PLUS. Use a roller to press the grommet in place.



5. Extend the flange

Prepare a sealing strip of SOLITEX WELDANO-S 3000 to suit the roof pitch and pipe diameter.



6. Attach the flange extension

Attach the sealing strip of SOLITEX WELDANO-S 3000 to the pipe with a suitable adhesive tape.



7. Weld the flange extension in place

Guide the sealing strip around the pipe and weld to one another and to the sealing flange of the grommet using WELDANO TURGA. Use a roller to press the bond in place.



8. Secure the flange extension

In addition, stick the sealing strip of SOLITEX WELDANO-S 3000 to the pipe and in the overlap area of the sealing strip using pro clima TESCON VANA.

Substrates

Before adhesion, SOLITEX WELDANO 3000 should be wiped clean with a cloth.

Adhesion to frozen surfaces is not possible. There must be no water-repellent substances (e.g. grease or silicone) on the membranes. Subsurfaces must be sufficiently dry and stable.

It is recommended that spot checks be performed to test the strength of the stuck joints.

General conditions

When carrying out adhesion using hot air or a solvent welding agent, press the membranes firmly into place using a plastic roller, taking care to ensure that there is sufficient resistance pressure.

Rainproof and waterproof adhesion can only be achieved on roof lining membranes that have been installed with no folds or creases.

The information provided here is based on practical experience and the current state of knowledge. We reserve the right to make changes to the recommended designs and processing or to make alterations due to technical developments and associated improvements in the quality of our products. We would be happy to inform you of the current technical state of the art at the time you use our products.

Further information about the application and construction can be found in the pro clima planning documentation. For queries please call the pro clima technical hotline on +49 (0)6202 278245.

MOLL
bauökologische Produkte GmbH
 Rheintalstraße 35 - 43
 D-68723 Schwetzingen
 Fon: +49 (0) 62 02 - 27 82.0
 eMail: info@proclima.de